

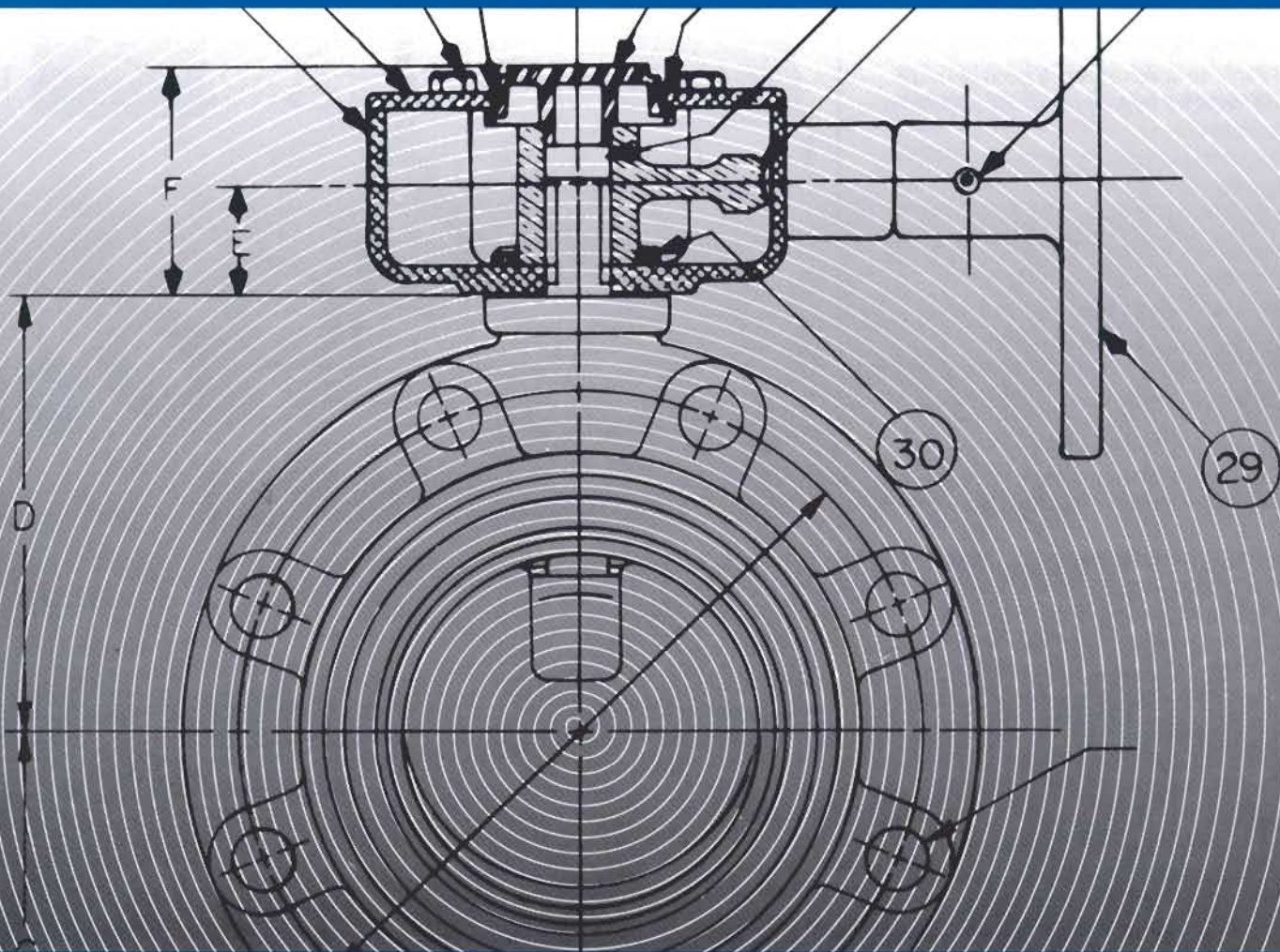
# NORRIS M&R-200 Series Data

Positive Shutoff

Angle-Disc

Butterfly

Valves



Solutions through engineered products.

**NORRISEAL**<sup>®</sup>  
A **DOVER** COMPANY

# NORRIS R-200 SERIES

## WHEN TO USE R-200 SERIES VALVES

- Use R-Series valves for positive shutoff to 200 psi wp.

Under certain service conditions Norris valves may be rated up to 250 psi wp. Consult factory for trim recommendations and pricing.

- Use R-Series valves for throttling control at flow rates up to 30 fps.
- Use R-Series valves at temperatures from  $-20^{\circ}$  to  $+250^{\circ}$ F.

Proper selection of seal elastomers must be made for valve applications at extreme temperatures.

- Use R-Series valves for bi-directional flow conditions.
- Use R-Series valves for controlling the flow of liquids, gases and solids, including abrasive and corrosive material.

R-Series valves are not recommended for handling gasoline and other volatile media. Volatile materials or solvents tend to dry out elastomers and make the valves difficult to operate. See M-Series section of catalog for gasoline service.

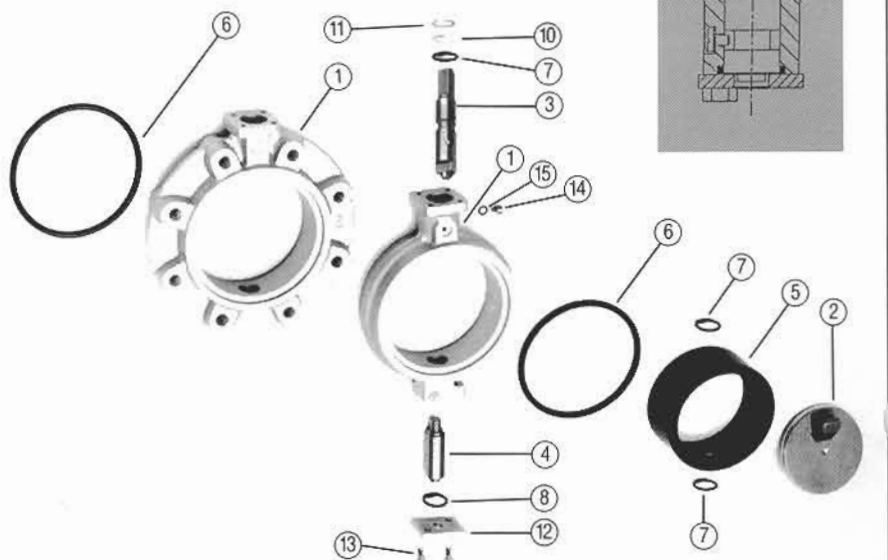
Rubber liner and double O-ring shaft seals prevent line media from contacting body of valve, making use of premium body materials unnecessary. Only the internal wetted parts need to be corrosion resistant to the media.

- Use R-Series lug-type valves for end-of-line suspension to full rated working pressure by temporarily installing a downstream flange or spool piece.

With the downstream flange removed, R-Series valves are derated for safety to 75 psi wp.

- Use R-Series valves for insulated lines. 14 inch and larger Norris valves will accommodate 2 inches of insulation on accompanying pipelines. A neck extender is available for use with 2 thru 12 inch water valves when lines are insulated.
- Use R-Series valves with ANSI Class 125 cast iron or Class 150 steel flanges. Weld neck or socket weld flanges are recommended for use with R-Series valves to provide support for the seat and to assure optimum performance at the full rated pressure of the valve. R-Series span type valves can be used with

## 2"-12" NORRIS BUTTERFLY VALVES



ANSI Class 300 flanges, however, some valve sizes may require special bolt drilling or spacers. Lug style bodies for use with ANSI Class 300 flanges are available on special order.

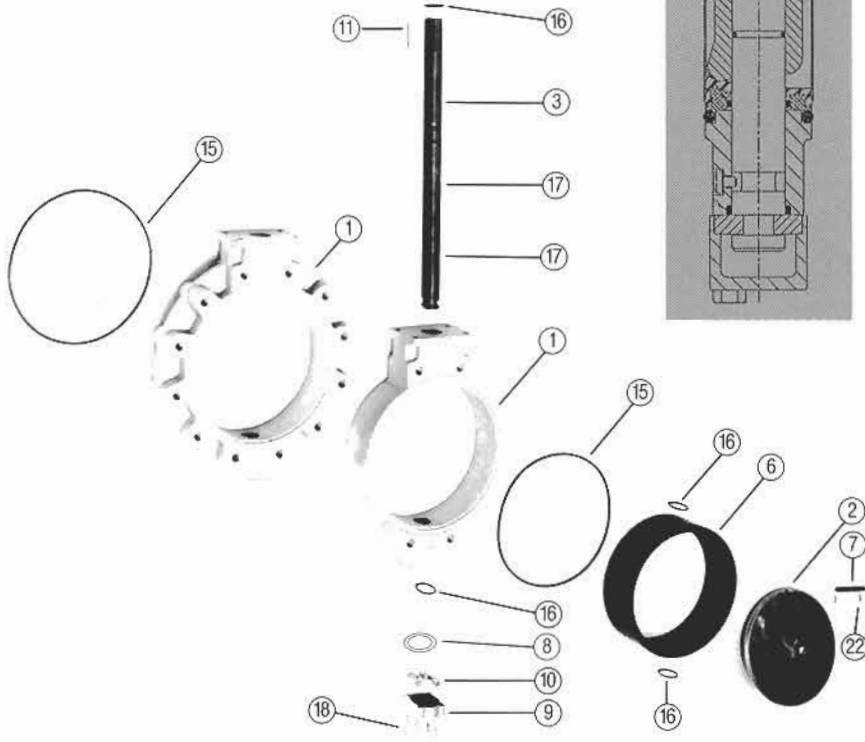
- R-Series valves are designed for use with standard weight or schedule 40 pipe inside dimensions. Check data sheets for specific clearance dimensions.

If heavy wall, plastic or cement lined pipe is used, back beveling at the flange may be required for disc clearance.

## 2"-12" NORRIS BUTTERFLY VALVES PARTS DESCRIPTION

- 1/Body** — Valve body is isolated from flow stream by resilient seat and O-ring seals. Steel bodies have Teflon bushings to prevent seizing with stainless steel shafts. Three different models and six materials are available. See exploded assembly.
- 2/Disc** — Angle disc construction gives  $360^{\circ}$  uninterrupted contact of disc with seat. Disc does not seat in shaft holes, assuring bubble-tight shutoff time after time with no scrubbing of the elastomer in the shaft hole areas. Disc drive slot assures positive disc action. Precision fit prevents disc "flutter."
- Operating Shaft** — Operating shaft is retained by a sealed retention screw for safety.

## 14"-36" NORRIS BUTTERFLY VALVES



## 14"-36" NORRIS BUTTERFLY VALVES PARTS DESCRIPTION

- **1/Body** — Valve body is isolated from flow stream by resilient seat and O-ring seals. All 14" and larger bodies have inboard and outboard shaft bushings for handling shaft loads and to provide minimum operating torque. Two models, 3 materials are available.
- **2/Disc** — Angle disc construction gives 360° uninterrupted contact of disc with seat. Disc does not seat in shaft holes, assuring bubble-tight shutoff time after time with no scrubbing of the elastomer in the shaft hole areas.
- **3/Shaft** — Through shaft, cross pinned to disc with straight dowel pin, assures maximum drive strength and field repairability. Disc pin does not penetrate the sealing plane of the disc.
- **6/Seat** — Field replaceable resilient seat is bonded to a rigid backing ring to prevent seat from distorting or collapsing due to high velocity flow or in vacuum service. Rigid backing also prevents seat collapse during installation of valve between flanges.
- **7/Disc Pin** — Disc pin does not penetrate the sealing plane of the disc.
- **8/Shim Set** — Assures proper disc support and centering in seating area.
- **9-10/Thrust Plate & Washer** — Retains shaft from bottom.
- **11/Key** — Provides precision fit with operator.
- **15/Body O-rings** — Body O-ring flange seals eliminate need for flange gaskets. Flange seals can be replaced without dismantling the valve and replacing the seat. Many times a damaged O-ring flange seal can be repaired simply by turning it over and returning it to the body face groove.
- **16/O-ring Seat And Shaft Seals** — Seat and shaft seals prevent stem leakage to atmosphere and permanently lubricated areas; protect from outside contamination.
- **17/O-ring Disc/Shaft Seals** — Seals prevent leakage across disc plane. Patented Teflon seal available.
- **18/Thrust Plate Capscrews** — To retain bottom thrust plate.
- **22/Disc Pin Capscrews** — To retain disc pin.

Shaft is double O-ring sealed to prevent leakage into shaft bearing areas and protect from outside contamination. Milled drive flats are parallel to disc, indicate disc position.

- **4/Bottom Shaft** — Stationary bottom shaft is double O-ring sealed to prevent stem leakage.
- **5/Seat** — Field replaceable resilient seat is bonded to a rigid backing ring to prevent seat from distorting or collapsing due to high velocity flow or in vacuum service. Rigid backing also prevents seat collapse during installation of valve between flanges.
- **6/Body O-rings** — Body O-ring flange seals eliminate need for flange gaskets. Flange seals can be replaced without dismantling the valve and replacing the seat. Many times a damaged O-ring flange seal can be repaired simply by turning it over and returning it to the body face groove.
- **7-8/O-ring Shaft Seals** — Shaft seals prevent leakage to atmosphere and permanently lubricated areas; protect from outside contamination.
- **10-11/Steel & Teflon Thrust Washers** — Provide precision fit with topworks. Eliminates "disc flutter".
- **12-13/Bottom Plate & Capscrews** — Bottom shaft is retained by a thrust plate and retention screw.
- **14-15/Capscrew & Washer** — Top shaft is retained by sealed retention screw for safety. Cannot be removed when valve is installed between flanges.

# NORRIS M-200 SERIES

## WHEN TO USE M-200 SERIES VALVES

- Use M-Series valves for positive shutoff to 200 psi wp.

Under certain service conditions Norris valves may be rated up to 250 psi wp. Consult factory for trim recommendations and pricing.

- Use M-Series valves for throttling control when flow rates do not exceed 16 fps.
- Use M-Series valves at temperatures from  $-40^{\circ}$  to  $+350^{\circ}$ F.

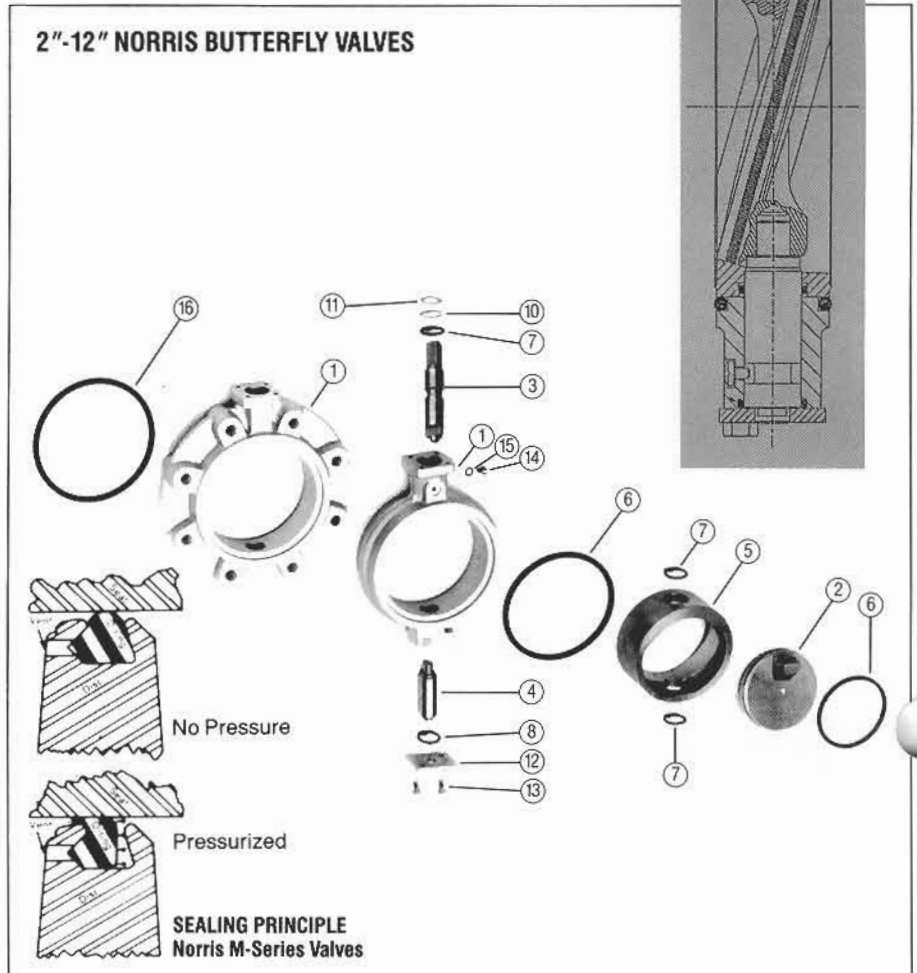
Proper selection of seal elastomers must be made for valve applications at extreme temperatures.

- Use M-Series valves of any size for complete bi-directional, zero bubble positive shutoff. A wide range of elastomer or teflon seals are available.
- Use M-Series valves for controlling the flow of liquids and gases, including volatile and corrosive material.

Limited use of elastomers in M-Series valves make them ideal for handling gasoline and other volatile media which tend to dry the elastomer. Field replaceable metal seat is available in a variety of exotic materials to resist corrosion. Metal seat liner and double O-ring shaft seals prevent line media from contacting body of valve, making use of premium body materials unnecessary. Only the internal wetted parts need to be corrosion resistant to the media. M-Series valves are not recommended for use when large abrasive material is present. See R-Series section.

- Use M-Series lug-type valves for end-of-line suspension to full rated working pressure without a downstream flange or spool piece.
- Use M-Series valves for insulated lines. 14 inch and larger Norris valves will accommodate 2 inches of insulation on accompanying pipelines. A neck extender is available for use with 2 thru 12 inch wafer valves when lines are insulated.
- Use M-Series valves with ANSI Class 125 cast iron or Class 150 steel flanges. Care should be exercised to assure that valve body is correctly centered when installing

## 2"-12" NORRIS BUTTERFLY VALVES



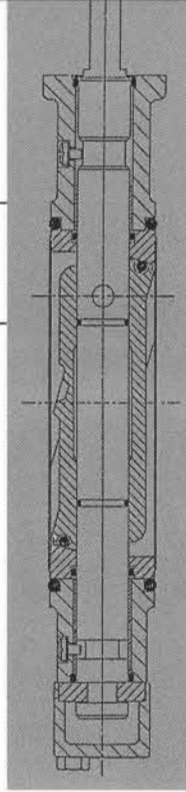
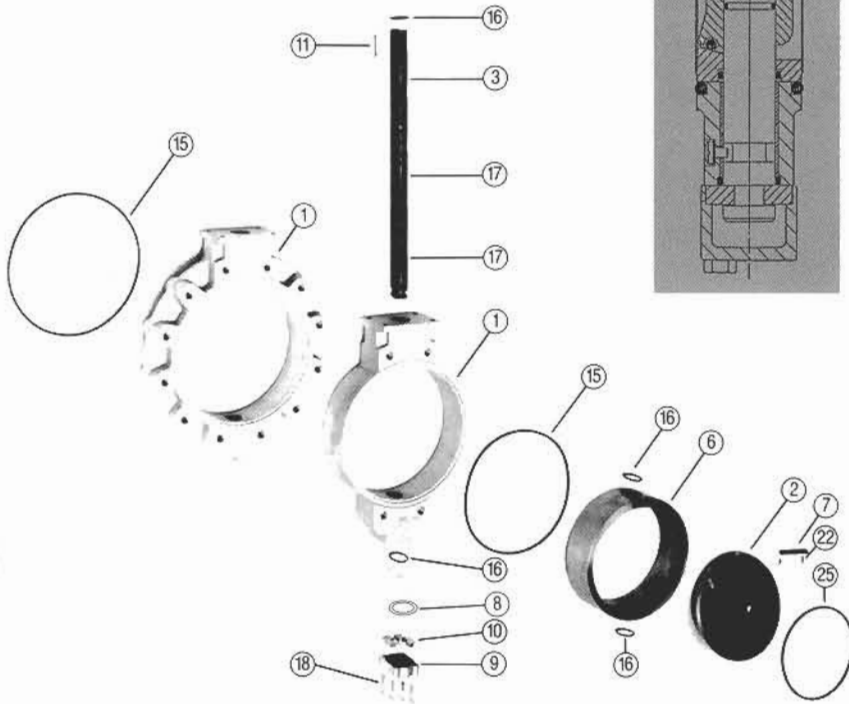
M-Series valves between slip-on flanges. M-Series span type valves can be used with ANSI Class 300 flanges, however, some valve sizes may require special bolt drilling or spacers. Lug style bodies for use with ANSI Class 300 flanges are available on special order. (Consult factory.)

- M-Series valves are designed for use with standard weight or schedule 40 pipe inside dimensions. Check data sheets for specific clearance dimensions. If heavy wall, plastic or cement lined pipe is used, back beveling at the flange may be required for disc clearance.
- Norris M-Series butterfly valves have been found to offer maximum resistance to damage from fire because of limited use of elastomers in the sealing design. (Request fire test report for specifics.)

## 2"-12" NORRIS BUTTERFLY VALVES PARTS DESCRIPTION

- 1/ Body** – Valve body is isolated from flow stream by metal seat and O-ring seals. Steel bodies have Teflon bushings to prevent seizing with stainless steel shafts. Three different models and six materials are available. See exploded assembly.
- 2/Disc** – Angle disc construction gives 360 degree uninterrupted contact of disc O-ring with seat for dependable bubble-tight shutoff. Disc drive slot assures positive disc action. Precision fit prevents disc "flutter."
- Operating Shaft** – Operating shaft is retained by a sealed retention screw for seal. Shaft is double O-ring sealed to prevent leakage into shaft bearing areas and protect from outside contamination, Milled

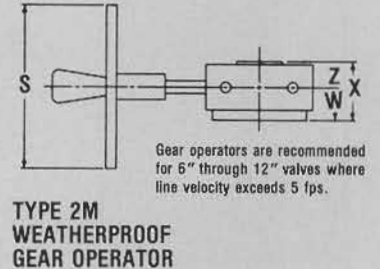
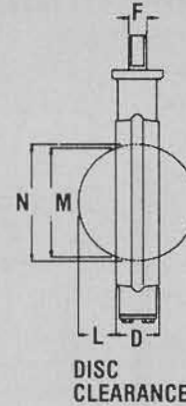
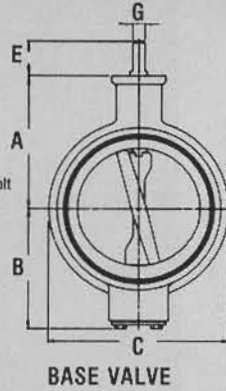
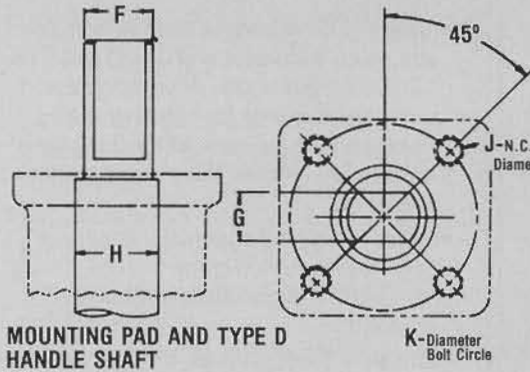
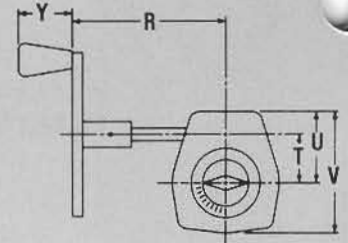
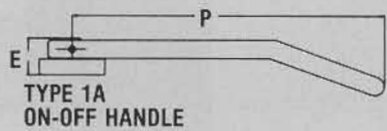
## 14"-36" NORRIS BUTTERFLY VALVES



## 14"-36" NORRIS BUTTERFLY VALVES PARTS DESCRIPTION

- drive flats are parallel to disc, indicate disc position.
- **4/Bottom Shaft** — Stationary bottom shaft is double O-ring sealed to prevent stem leakage.
- **5/Seat** — Field replaceable metal seat isolates valve body from flow stream, eliminates need for premium body material.
- **6/Body O-rings** — Body O-ring flange seals eliminate need for flange gaskets. Flange seals can be replaced without dismantling the valve and replacing the seat. Many times a damaged O-ring flange seal can be repaired simply by returning it to the body face groove.
- **7-8/O-ring Shaft Seals** — Shaft seals prevent leakage to atmosphere and permanently lubricated areas; protect from outside contamination.
- **10-11/Steel & Teflon Thrust Washers** — Provide precision fit with topworks. Eliminates "disc flutter"
- **12-13/Bottom Plate & Capscrews** — Bottom shaft is retained by a thrust plate.
- **14-15/Capscrew & Washer** — Top and bottom shafts are retained by sealed retention screws for safety. Cannot be removed when valve is installed between flanges.
- **16/Disc O-ring Seal** — Pressure energized O-ring seal contained in specially designed groove in disc edge assures positive shutoff. The higher the pressure the tighter the seal.
- **1/Body** — Valve body is isolated from flow stream by metal seat and O-ring seals. All 14" and larger bodies have inboard and outboard bushings for handling shaft loads and to provide minimum operating torque. Two models, three materials are available.
- **2/Disc** — Angle disc construction gives 360° uninterrupted contact of disc O-ring with seat for dependable bubble-tight shutoff.
- **3/Shaft** — Through shaft, cross pinned to disc with straight dowel pin, assures maximum drive strength and field repairability. Disc pin does not penetrate sealing plane of the disc.
- **6/Seat** — Field replaceable metal seat isolates valve body from flow stream, eliminates need for premium body material.
- **7/Disc Pin** — Disc pin does not penetrate the sealing plane of the disc.
- **8/Shim Set** — Assures proper disc support and centering in seating area.
- **9-10/Thrust Plate & Washer** — Retains shaft from bottom.
- **11/Key** — Provides precision fit with operator.
- **15/Body O-rings** — Body O-ring flange seals eliminate need for flange gaskets. Flange seals can be replaced without dismantling the valve and replacing the seat. Many times a damaged O-ring flange seal can be repaired simply by turning it over and returning it to the body face groove.
- **16/O-ring Seat And Shaft Seals** — Seat and shaft seals prevent stem leakage to atmosphere and permanently lubricated areas; protect from outside contamination.
- **17/O-ring Disc/Shaft Seals** — Seals prevent leakage across disc plane. Patented Teflon seal available.
- **18/Thrust Plate Capscrews** — To retain bottom thrust plate.
- **22/Disc Pin Capscrews** — To retain disc pin.
- **25/Disc O-ring Seal** — Pressure energized O-ring seal contained in a specially designed groove in disc edge assures positive shutoff. The higher the pressure the tighter the seal.

# R&M-1000 2"-12" Valves



## Valve Dimensions

Dimension Reference	Valve Size (Inches/mm)									
	2/50	2.5/65	3/75	3.5/90	4/100	5/125	6/150	8/200	10/250	12/300
A	3.70	4.16	4.41		4.88	5.28	6.50	7.47	9.38	10.41
B	3.22	3.75	4.05		4.50	4.91	6.00	6.94	8.66	9.69
C	4.13	4.88	5.38		6.88	7.75	8.75	10.88	13.38	16.00
D	1.63	1.75	1.75	Not Available	2.00	2.14	2.13	2.50	2.50	3.00
E	1.31	1.31	1.31	Not Available	1.31	1.31	1.69	1.69	2.00	2.00
F	.69	.69	.69	Not Available	.69	.69	.88	.88	1.06	1.06
G	.50	.50	.50	Not Available	.50	.50	.63	.63	.75	.75
H	.69	.88	.88		.88	.88	1.06	1.06	1.38	1.38
J	.25	.25	.25		.25	.25	.38	.38	.38	.38
K	1.81	1.81	1.81		1.81	1.81	2.34	2.34	2.63	2.63

## Disc Clearance

L	.38	.50	.75		1.13	1.56	1.94	2.69	3.75	4.50
M	1.77	2.06	2.69	N.A.	3.59	4.72	5.55	7.44	9.58	11.52
N	2.41	2.72	3.20		4.19	5.17	5.91	7.81	9.89	11.89

## Approx. Wt. - Cast Iron Body

	5	7	9	—	14	17	23	37	59	80
--	---	---	---	---	----	----	----	----	----	----

## Bolt Data

FOR USE WITH ANSI CLASS 150 WELDNECK FLANGES. For optimum valve performance, it is recommended that butterfly valves be installed between weldneck flanges or flanges with equivalent inside dimensions.

Bolt Size	.63 x	.63 x	.63 x		.63 x	.75 x	.75 x	.75 x	.88 x	.88 x
Number Required	4.00	4.50	4.50	N.A.	4.50	5.50	5.50	6.00	6.00	7.00
	4	4	4	—	8	8	8	8	12	12

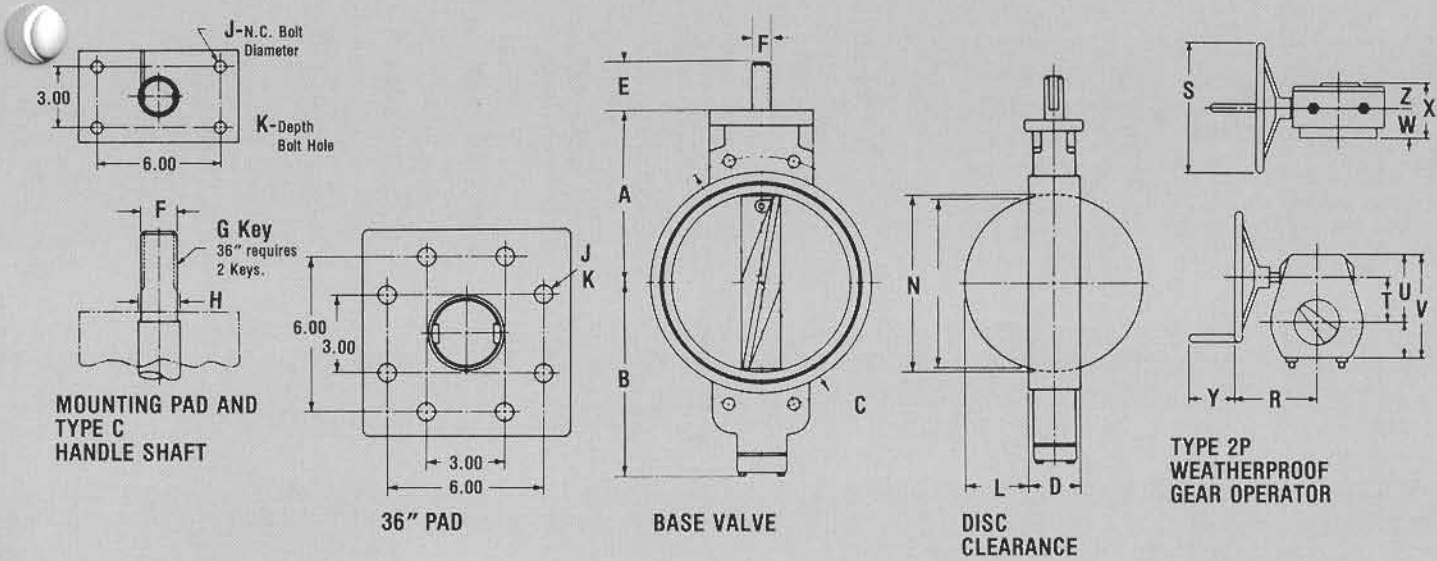
## Operator Dimensions

P	9.94	9.94	9.94		9.94	9.94	9.94	9.94	16.00	16.00
Q	3.34	3.34	3.34		3.34	3.34	3.00	3.00	3.66	3.66
R	6.88	6.88	6.88		6.88	6.88	7.50	7.50	8.00	8.00
S	6.00	6.00	6.00	Not Available	6.00	6.00	8.00	8.00	8.00	8.00
T	2.36	2.36	2.36	Not Available	2.36	2.36	2.36	2.36	3.00	3.00
U	3.50	3.50	3.50	Not Available	3.50	3.50	3.50	3.50	4.38	4.38
V	5.93	5.93	5.93	Not Available	5.93	5.93	5.93	5.93	7.50	7.50
W	5.25	5.25	5.25	Not Available	5.25	5.25	5.25	5.25	6.75	6.75
X	2.92	2.92	2.92	Not Available	2.92	2.92	2.92	2.92	3.27	3.27
Y	2.63	2.63	2.63		2.63	2.63	2.63	2.63	2.63	2.63
Z	1.69	1.69	1.69		1.69	1.69	1.69	1.69	1.88	1.88

## Approx. Wt. 2M & 2MM Operator

	7	7	7		7	7	8	8	13	13
--	---	---	---	--	---	---	---	---	----	----

# R&M-1000 14"-36" Valves



## Valve Dimensions

Dimension Reference	Valve Size (Inches/mm)		14/350	16/400	18/450	20/500	22/550	24/600	26/650	28/700	30/750	32/800	36/900
A	12.63	14.00	14.75	16.00	17.38	17.50	20.13	22.75	23.75	24.50	26.13		
B	14.25	15.63	16.63	17.88	18.00	19.00	20.61	21.83	22.70	24.23	29.38		
C	18.75	21.25	22.75	25.00	27.25	29.50	31.75	34.00	36.00	38.50	42.75		
D	3.75	4.13	4.63	5.13	5.00	5.00	6.00	6.50	7.00	7.00	8.50		
E	3.94	3.94	3.94	3.94	3.94	3.94	3.94	3.94	3.94	3.94	4.75		
F	1.75	1.75	1.75	2.50	2.50	2.50	2.50	2.50	2.50	2.50	3.00		
G	.38x2.5	.38x2.5	.38x2.5	.63x2.94	.63x2.94	.63x2.94	.63x2.94	.63x2.94	.63x2.94	.63x2.94	.63x2.94	.75x3.0	
H	1.75	2.00	2.25	2.50	2.50	2.50	3.00	3.00	3.00	3.50	3.50		
J	.63	.63	.63	.63	.63	.63	.75	.75	.75	.75	.75		
K	1.50	1.50	1.50	1.50	1.50	1.50	1.50	1.50	1.50	1.50	1.50		

## Disc Clearance

L	4.79	5.61	6.36	7.14	8.19	9.19	9.60	10.36	11.10	11.96	12.88		
M	12.80	14.78	16.72	18.72	20.75	22.83	24.50	26.38	28.50	30.13	34.25		
N	13.34	15.34	17.34	19.41	21.33	23.38	25.51	27.21	29.21	30.96	35.25		

## Approx. Wt. - Cast Iron Body

187	262	351	432	550	606	790	910	1160	1220	1840
-----	-----	-----	-----	-----	-----	-----	-----	------	------	------

## Bolt Data

FOR USE WITH ANSI CLASS 150 WELDNECK FLANGES. For optimum valve performance, it is recommended that butterfly valves be installed between weldneck flanges or flanges with equivalent inside dimensions.

Bolt Size	1.00 x 7.75	1.00 x 8.50	1.13 x 9.00	1.13 x 10.00	1.25 x 11.50	1.25 x 11.50	1.25 x 13.00	1.25 x 13.50	1.25 x 14.00	1.50 x 14.00	1.50 x 15.00
Number Required (Both Required)	8	12	12	16	16	16	20	24	24	24	28
Capscrew Size	1.00 x 3.00	1.00 x 3.00	1.13 x 3.00	1.13 x 3.00	1.25 x 3.50	1.25 x 4.00	1.25 x 3.50	1.25 x 3.25	1.25 x 3.50	1.50 x 3.75	1.50 x 3.75
Number Required	8	8	8	8	8	8	8	8	8	8	8

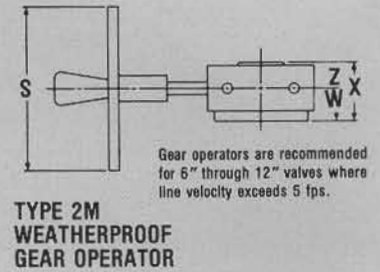
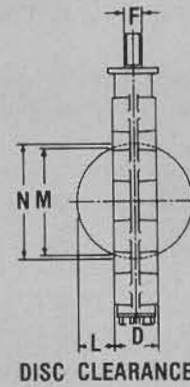
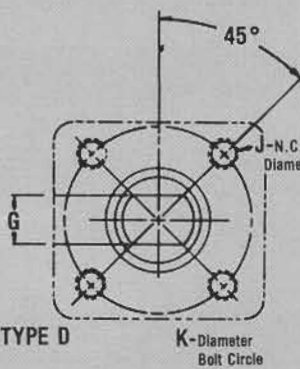
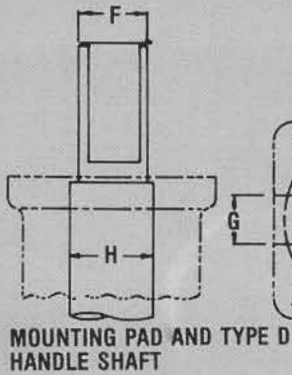
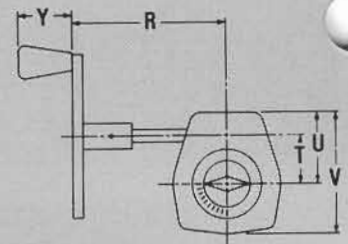
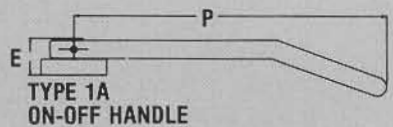
## Operator Dimensions

R	9.75	9.75	9.75	17.25	17.25	17.25	17.84	17.84	17.84	17.84	17.84
S	12.75	12.75	12.75	24.00	24.00	24.00	24.00	24.00	24.00	24.00	24.00
T	4.83	4.83	4.83	5.38	5.38	5.38	2.69	2.69	2.69	2.69	7.13
U	6.63	6.63	6.63	7.63	7.63	7.63	9.44	9.44	9.44	9.44	10.81
V	10.13	10.13	10.13	11.13	11.13	11.13	14.94	14.94	14.94	14.94	16.31
W	9.00	9.00	9.00	10.81	10.81	10.81	12.00	12.00	12.00	12.00	14.00
X	5.00	5.00	5.00	5.14	5.14	5.14	7.38	7.38	7.38	7.38	7.75
Y	4.50	4.50	4.50	N.A.	N.A.	N.A.	N.A.	N.A.	N.A.	N.A.	N.A.
Z	2.88	2.88	2.88	2.88	2.88	2.88	4.00	4.00	4.00	4.00	4.00

## Approx. Wt.

2P & 2PM Operator	70	70	70	90	90	90	90	210	210	210	260
-------------------	----	----	----	----	----	----	----	-----	-----	-----	-----

# R&M-3000 2"-12" Valves



Valve Dimensions	Dimension Reference	Valve Size (Inches/mm)									
		2/50	2.5/65	3/75	3.5/90	4/100	5/125	6/150	8/200	10/250	12/300
A		3.70	4.16	4.41	4.63	4.88	5.28	6.50	7.47	9.38	10.41
B		3.22	3.75	4.05	4.25	4.50	4.91	6.00	6.94	8.66	9.69
C		4.75	5.50	6.00	7.00	7.50	8.50	9.50	11.75	14.25	17.00
D		1.63	1.75	1.75	1.94	2.00	2.13	2.13	2.50	2.50	3.00
E		1.31	1.31	1.31	1.31	1.31	1.31	1.69	1.69	2.00	2.00
F		.69	.69	.69	.69	.69	.69	.88	.88	1.06	1.06
G		.50	.50	.50	.50	.50	.50	.63	.63	.75	.75
H		.69	.88	.88	.88	.88	.88	1.06	1.06	1.38	1.38
J		.25	.25	.25	.25	.25	.25	.38	.38	.38	.38
K		1.81	1.81	1.81	1.81	1.81	1.81	2.34	2.34	2.63	2.63

Disc Clearance	Dimension Reference	Valve Size (Inches/mm)									
		2/50	2.5/65	3/75	3.5/90	4/100	5/125	6/150	8/200	10/250	12/300
L		.38	.50	.75	.94	1.13	1.56	1.94	2.69	3.75	4.50
M		1.77	2.06	2.69	3.16	3.59	4.72	5.55	7.44	9.58	11.52
N		2.41	2.72	3.20	3.72	4.19	5.17	5.91	7.81	9.89	11.89

Approx. Wt. - Cast Iron Body	Valve Size (Inches/mm)									
	2/50	2.5/65	3/75	3.5/90	4/100	5/125	6/150	8/200	10/250	12/300
	7	9	11	14	18	22	30	44	68	108

## Bolt Data

FOR USE WITH ANSI CLASS 150 WELDNECK FLANGES. For optimum valve performance, it is recommended that butterfly valves be installed between weldneck flanges or flanges with equivalent inside dimensions.

Capscrew Size*	Valve Size (Inches/mm)									
	2/50	2.5/65	3/75	3.5/90	4/100	5/125	6/150	8/200	10/250	12/300
	.63 NC x 1.50	.63 NC x 1.50	.63 NC x 1.75	.63 NC x 1.75	.63 NC x 1.75	.75 NC x 1.75	.75 NC x 2.00	.75 NC x 2.25	.88 NC x 2.25	.88 NC x 2.50
Number Required	8	8	8	16	16	16	16	16	24	24

\*Through-tapped from face to face for studs or capscrews unless specified otherwise.

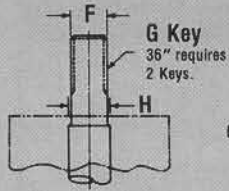
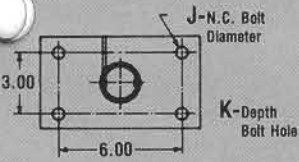
## Operator Dimensions

Operator Dimensions	Valve Size (Inches/mm)									
	2/50	2.5/65	3/75	3.5/90	4/100	5/125	6/150	8/200	10/250	12/300
P	9.94	9.94	9.94	Not Available	9.94	9.94	9.94	9.94	16.00	16.00
Q	3.34	3.34	3.34	Not Available	3.34	3.34	3.00	3.00	3.66	3.66
R	6.88	6.88	6.88	Not Available	6.88	6.88	7.50	7.50	8.00	8.00
S	6.00	6.00	6.00	Not Available	6.00	6.00	8.00	8.00	8.00	8.00
T	2.36	2.36	2.36	Not Available	2.36	2.36	2.36	2.36	3.00	3.00
U	3.50	3.50	3.50	Not Available	3.50	3.50	3.50	3.50	4.38	4.38
V	5.93	5.93	5.93	Not Available	5.93	5.93	5.93	5.93	7.50	7.50
W	5.25	5.25	5.25	Not Available	5.25	5.25	5.25	5.25	6.75	6.75
X	2.92	2.92	2.92	Not Available	2.92	2.92	2.92	2.92	3.27	3.27
Y	2.63	2.63	2.63	Not Available	2.63	2.63	2.63	2.63	2.63	2.63
Z	1.69	1.69	1.69	Not Available	1.69	1.69	1.69	1.69	1.88	1.88

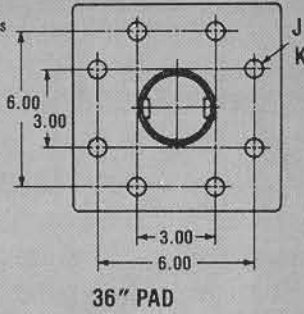
Approx. Wt. 2M & 2MM Operator	Valve Size (Inches/mm)									
	2/50	2.5/65	3/75	3.5/90	4/100	5/125	6/150	8/200	10/250	12/300
	7	7	7	Not Available	7	7	8	8	13	13

# R&M-3000 14"-36" Valves

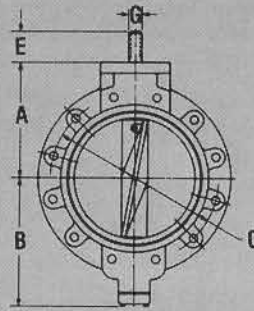
## 3000 14"-36" Valves Certified Dimensions



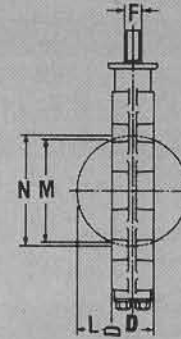
**MOUNTING PAD AND  
TYPE C  
HANDLE SHAFT**



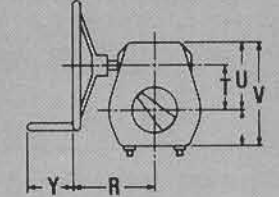
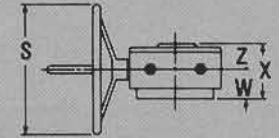
**36" PAD**



**BASE VALVE**



**DISC CLEARANCE**



**TYPE 2P  
WEATHERPROOF  
GEAR OPERATOR**

**Dimension Reference Valve Size (Inches/mm)**

### Valve Dimensions

	14/350	16/400	18/450	20/500	22/550	24/600	26/650	28/700	30/750	32/800	36/900
A	12.63	14.00	14.75	16.00	17.38	17.50	20.13	22.75	23.75	24.50	26.13
B	14.25	15.63	16.63	17.88	18.00	19.00	20.61	21.83	22.70	24.23	29.38
C	18.75	21.25	22.75	25.00	27.25	29.50	31.75	34.00	36.00	38.50	42.75
D	3.75	4.13	4.63	5.13	5.00	5.00	6.00	6.50	7.00	7.00	8.50
E	3.94	3.94	3.94	3.94	3.94	3.94	3.94	3.94	3.94	3.94	4.75
F	1.75	1.75	1.75	2.50	2.50	2.50	2.50	2.50	2.50	2.50	3.00
G	.38x2.5	.38x2.5	.38x2.5	.63x2.94	.63x2.94	.63x2.94	.63x2.94	.63x2.94	.63x2.94	.63x2.94	.75x3.0
H	1.75	2.00	2.25	2.50	2.50	2.50	3.00	3.00	3.00	3.50	3.50
J	.63	.63	.63	.63	.63	.63	.75	.75	.75	.75	.75
K	1.50	1.50	1.50	1.50	1.50	1.50	1.50	1.50	1.50	1.50	1.50

### Disc Clearance

L	4.79	5.61	6.36	7.14	8.19	9.19	9.60	10.36	11.10	11.96	12.88
M	12.80	14.78	16.72	18.72	20.75	22.83	24.50	26.38	28.50	30.13	34.25
N	13.34	15.34	17.34	19.41	21.33	23.38	25.51	27.21	29.21	30.96	35.25

### Approx. Wt. - Cast Iron Body

	234	339	432	538	590	621	960	1150	1300	1360	2150
--	-----	-----	-----	-----	-----	-----	-----	------	------	------	------

### Bolt Data

FOR USE WITH ANSI CLASS 150 WELDNECK FLANGES. For optimum valve performance, it is recommended that butterfly valves be installed between weldneck flanges or flanges with equivalent inside dimensions.

Capscrew Size	1.00 NC x 3.00	1.00 NC x 3.00	1.13 NC x 3.50	1.13 NC x 3.50	1.25 NC x 4.00	1.25 NC x 4.00	1.25 NC x 4.00	1.25 NC x 4.00	1.25 NC x 4.00	1.50 NC x 4.50	1.50 NC x 4.50
Number Required (Both Required)	24	32	32	32	32	40	40	48	48	48	64
Capscrew Size				1.13 NC x 3.00	1.25 NC x 3.50		1.25 NC x 3.50	1.25 NC x 3.25	1.25 NC x 3.50	1.50 NC x 3.75	1.50 NC x 4.00
Number Required	N.A.	N.A.	N.A.	8	8	N.A.	8	8	8	8	8

### Operator Dimensions

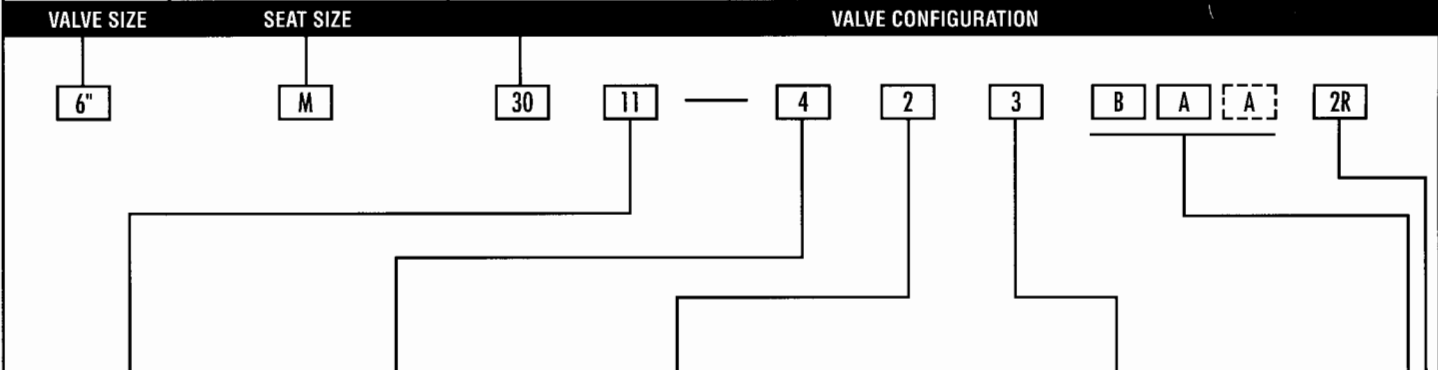
R	9.75	9.75	9.75	17.25	17.25	17.25	17.84	17.84	17.84	17.84	17.84
S	12.75	12.75	12.75	24.00	24.00	24.00	24.00	24.00	24.00	24.00	24.00
T	4.83	4.83	4.83	5.38	5.38	5.38	2.69	2.69	2.69	2.69	7.13
U	6.63	6.63	6.63	7.63	7.63	7.63	9.44	9.44	9.44	9.44	10.81
V	10.13	10.13	10.13	11.13	11.13	11.13	14.94	14.94	14.94	14.94	16.31
W	9.00	9.00	9.00	10.81	10.81	10.81	12.00	12.00	12.00	12.00	14.00
X	5.00	5.00	5.00	5.14	5.14	5.14	7.38	7.38	7.38	7.38	7.75
Y	4.50	4.50	4.50	N.A.	N.A.	N.A.	N.A.	N.A.	N.A.	N.A.	N.A.
Z	2.88	2.88	2.88	2.88	2.88	2.88	4.00	4.00	4.00	4.00	4.00

### Approx. Wt.

2P & 2PM Operator	70	70	70	90	90	90	90	210	210	210	260
-------------------	----	----	----	----	----	----	----	-----	-----	-----	-----

# VALVE MODEL NUMBER SYSTEM 200 WP

Position 1: Valve Size (In Inches)  2"-36"	R - Resilient Seat	00 - Special to be described
	M - Metal Seat	10 - Span Wafer Body
	D - Metal to Metal Seat (Damper Style)	20 - (1.50-12) Double Rib Span Wafer Body
		30 - Full Tapped Lug Body
	R Series: Seat Material, Seal Materials	
	M Series: Face Seal, Shaft Seals, Disc Seal.	



BODY MATERIAL	DISC MATERIAL	SHAFT MATERIAL	SEAT MATERIAL
10 - Cast Iron ASTM A126 Class B 11 - (D) Ductile Iron, ASTM A395 60-40-18 20 - (WCB) Cast Steel, ASTM A216 GR WCB 21 - (3) Stainless Steel, ASTM A743 GR CF-8M 22 - Alloy 20, ASTM A743 GR CN7M 30 - (L) Valve Bronze, ASTM B61 31 - (FK) NI-CU-AL Bronze, ASTM B148 Alloy C95800 40 - (A) Aluminum Alloy 356T6, ASTM B26 Alloy SG70A • Special Order - Consult Factory	1 - (D) Ductile Iron, ASTM A395 60-40-18 2 - (3) Stainless Steel 316, ASTM A743 GR CF-8M 3 - (C) Alloy 20, ASTM A743 GR CN7M 4 - ( ) Aluminum Bronze (AO) 2-14" ASTM B148 Alloy C95400 (AL) 16"-36" ASTM B148 C95500 5 - (A) Aluminum Alloy 356T6 ASTM B26 Alloy 6 - (M) Nickel-Copper Alloy (Monel) ASTM A494, M30C 9 - (AJ) Titanium ASTM B367 GR8A 0 - ( ) Special to be described B - (BH) Hastelloy B, ASTM A494 C - (AM) Hastelloy C, ASTM A494 CW 12-MW G - (W) Inconel 600/ASTM A494 Alloy C4-40 K - (EA) Ilium PD P - (FK) NI-CU-AL Bronze ASTM B148 Alloy C95800	1 - (C) Ductile Iron, ASTM B473, UNS N08020 2 - (3) Stainless Steel, ASTM A276, Type 316 3 - (F) Stainless Steel, ASTM A276, Type 416 4 - (M) Nickel Copper Alloy (Monel) ASTM B164 Class A 5 - (EN) Nitronic 50 6 - (K) NI-CU-AL Alloy QQ-N-286A (K-MONEL) 7 - (AP) Stainless Steel 17-4PH ASTM A564 Type 630 8 - (W) Inconel 600 9 - (AJ) Titanium ASTM B348 GR 4 0 - ( ) Special to be described B - (BH) Hastelloy B, ASTM B335 C - (AM) Hastelloy C, ASTM B574 Alloy N102.76 F - (EB) Zirconium • K-Monel std. in 22" & larger valves with Monel shaft	"M" Series 1 - (G) Cast Iron, ASTM A126 Class B 2 - (3) Stainless Steel 316, ASTM A743 GR CF-8M 3 - (AB) Aluminum Bronze, ASTM B148 Alloy C95300 4 - (A) Aluminum Alloy 356T6, ASTM B26 Alloy SG70A 5 - (M) NI CU Alloy (Monel), ASTM A494, M30C 6 - (W) INCONEL No. 610 7 - (C) Stainless Steel Alloy 20, ASTM A743 GR CN7M 9 - (AJ) Titanium ASTM B367 GR BA 0 - ( ) Special to be described B - (BH) Hastelloy B, ASTM A494 N-12MV C - (AM) Hastelloy C, ASTM A494 CW 12-MW D - (EB) Zirconium F - (EA) Ilium PD G - (FK) NI CU-AL Bronze ASTM B148 Alloy C95800 "R" Series 1 - (C) Alloy 20, ASTM B473, UNS N08020 A - Nitrile B - Fluoroelastomer B2 - Viton GF/Epoxy Backing B3 - Fluoroelastomer/Epoxy Backing D - TFE Impregnated Fluoroelastomer E - Neoprene (Black) E2 - Neoprene/Epoxy Backing "R" Series Continued G - Neoprene (White) J - Nitrile, Abrasive Resistant K - Hypalon L - ECO N - Natural Rubber S - EPDM, Peroxide cured 4 - HSN, Highly Saturated Nitrile/Epoxy Backing 5 - Natural Red Rubber 8 - Peroxide Cured Nitrile Z - Special to be described

SEALS (Note 2)
A - Nitrile
B - Fluoroelastomer
C - Fluorosilicone
D - PTFE Impregnated Fluoroelastomer
E - Neoprene (Black)
G - Neoprene (White)
K - Hypalon
L - ECO
M - Nitrile (LOW TEMP)
N - Natural Rubber
R - AFLAS
S - EPDM
v - Low Temp Neoprene
Y - Kalrez
Z - Zolok
4 - Highly Saturated Nitrile
B - Peroxide Cured Nitrile
9A - TFE/SIL

MANUAL OPERATORS	MECHANICAL OPERATORS	DIAPHRAGM OPERATORS	NORRIS OPERATORS
1A (1.5-12) STD Handle with 1J Topworks 1F (2-12) Squeeze Trigger 10 Pos 1FM (1.5-12) 1F with Marine Trim 1J (2-12) STD Topworks On-Off 1AM (2-5) STD Handle with 1S Topworks 1P (2-8) Locking Topworks 1Q (2-5) 1P Topworks with STD Handle 1JS (2-8) STD Dn-Off Topworks, Stainless Steel	2E (2-12) Gear - W.P. - Aluminum Bronze Marine Trim 2ES (2-12) 2E Subm. for Salt Water 2R (2-10) Gear Operator Aluminum Case 2T (2-36) Gear Operator Cast Iron Case 2RM 2R with Marine Trim 2TM 2T with Marine Trim	** 2G11 (2-4) 35 SR Diaphragm Actuator Closed Yoke 2G12 (2-4) 35 PB Diaphragm Actuator Closed Yoke 2G13 (2-8) 70 SR Diaphragm Actuator Closed Yoke 2G14 (2-8) 70 PB Diaphragm Actuator Closed Yoke 2G15 (6-12) 180A SR Diaphragm Actuator Closed Yoke 2G16 (6-12) 180A PB Diaphragm Actuator Closed Yoke 2G17 (12-20) 180 SR Diaphragm Actuator Closed Yoke 2G18 (12-20) 180 PB Diaphragm Actuator Closed Yoke ** 2G Numbers listed are Basic Numbers only. Complete actuator Model Number must be used when ordering. SR-Spring Return. Specify Fail/Open or Fail/Closed. PB-Pressure Balanced/Double Acting.	NORRIS OPERATORS

## R200 SERIES

### TYPICAL SPECIFICATIONS, GENERAL PURPOSE TRIM

Valves 2" through 36" shall be resilient lined wafer-lug butterfly type with replaceable body O-ring flange seals. Bodies shall be of high-strength ductile iron with aluminum bronze discs, 416 stainless steel shafts, aluminum bronze seats and Buna N (Hycar®) seats and seals. *For more severe applications, consult trim table, above, for proper body, disc, shaft, seal and O-ring material selection.* Valves through 5" shall have lever handles for on-off service or other specified operator. Valves 6" and larger shall be equipped with weatherproof gear operators or other specified operator. Valves shall be suitable for installation

between ANSI Class 150 weldneck flanges without special preparation. Butterfly valves shall be Norris Angle, Disc. Model R3011-43AA-1A or other selected model number.

### WHEN EXPERIENCE COUNTS IN THE FIELD, WE'RE CLOSE AT HAND

Norris provides service through a domestic and international distribution network. We also maintain 3 company-owned branch warehouses and a staff of well-trained field representatives who are strategically located to serve you better.

## M200 SERIES

### TYPICAL SPECIFICATIONS, GENERAL PURPOSE TRIM

Valves 2" through 36" shall be metal lined wafer-span butterfly type. Bodies shall be of high-strength cast iron with aluminum bronze discs, 416 stainless steel shafts, aluminum bronze seats and Buna N (Hycar®) seals. *For more severe applications, consult trim table, above, for proper body, disc, shaft, seal and O-ring material selection.* Valves through 5" shall have lever handles for on-off service or other specified operator. Valves 6" and larger shall be equipped with weatherproof gear operators or other specified operator. Valves shall be suitable for installation between ANSI Class 150 weldneck flanges or

other specified flanges without special preparation. Butterfly valves shall be Norris Angle, Disc. Model M1011-433A or other selected model number.

### WHEN EXPERIENCE COUNTS IN THE FIELD, WE'RE CLOSE AT HAND

Norris provides service through a domestic and international distribution network. We also maintain 3 company-owned branch warehouses and a staff of well-trained field representatives who are strategically located to serve you better.

# NORRISEAL

## Family of Products

For more information, contact your nearest Norriseal Office or Representative



© 2001 Delaware Capital Formation, Inc. All Rights Reserved. DOVER and the DOVER logo are registered trademarks of Delaware Capital Formation, Inc., a wholly-owned subsidiary of Dover Corporation.

Solutions through engineered products.  
**NORRISEAL**<sup>®</sup>  
A **DOVER** COMPANY

P.O. Box 40525 – Houston, TX 77240-0525  
Phone: (713) 466-3552 • Fax (713) 896-7386  
[www.norriseal.com](http://www.norriseal.com)